



HOIST-SLING SAFETY INSPECTION GUIDE

Maintaining Consistent Care

DISCLAIMER

- The following presentation is only a guide & does not in any way replace a hoist-sling manufacturers instructions. Always read the manufacturers instructions for the safe use of the hoist-sling.
- Where ever there is varied opinion always only go by the manufacturers instruction.
- If there are any queries about the safe use of a hoist-sling contact the manufacturer or supplier of the sling for clarification.

© Able Tech Services Ltd 2023

No part of this publication may be reproduced or passed on in any form without the written authorisation of Able Tech Services Ltd.



IS YOUR HOIST-SLING SAFE TO USE?



Hoist-sling safety checks can prevent an unnecessary injury!

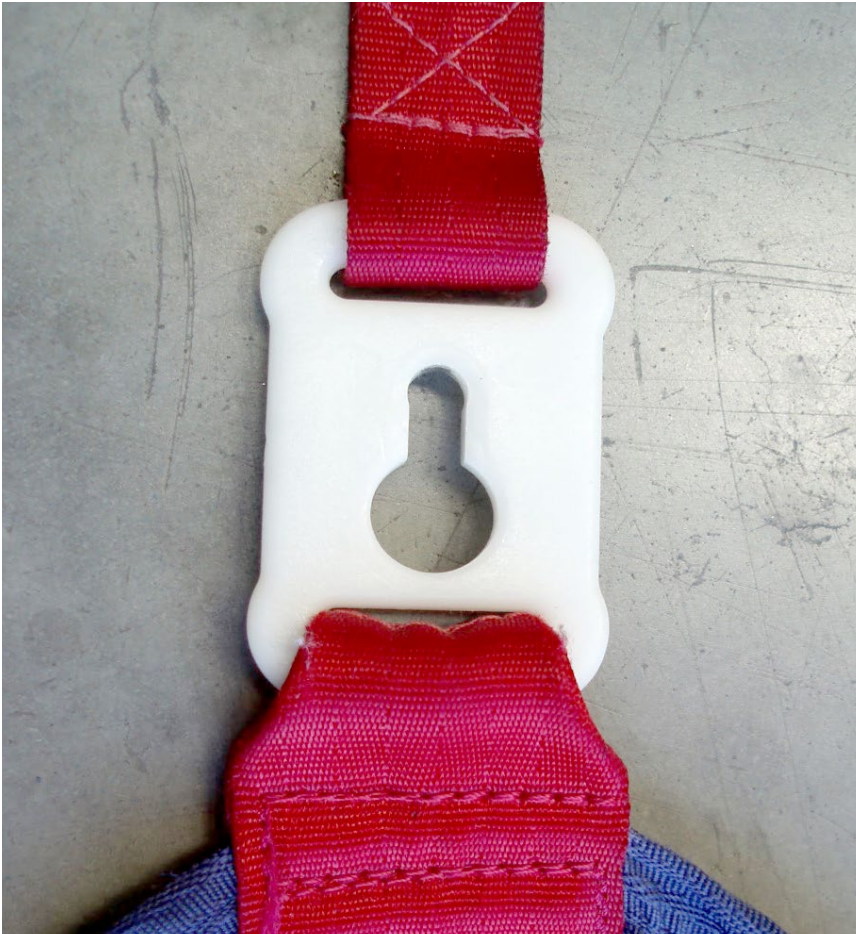
The following guide will help you to identify potential hazards.

01. SIDE RELEASE BUCKLES

Do not use if buckles are broken!



02. WORN KEY-LOCKS

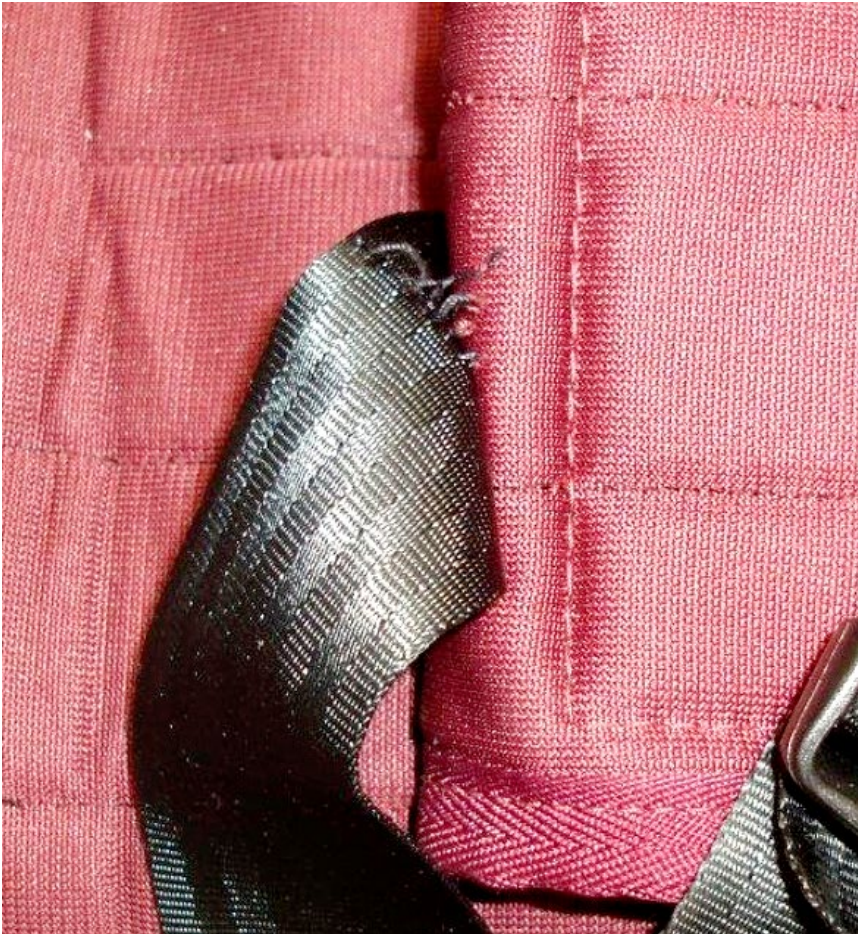


Key-locks must snap “click” into position.

Loose key locks can cause the harness to potentially drop off during a transfer.

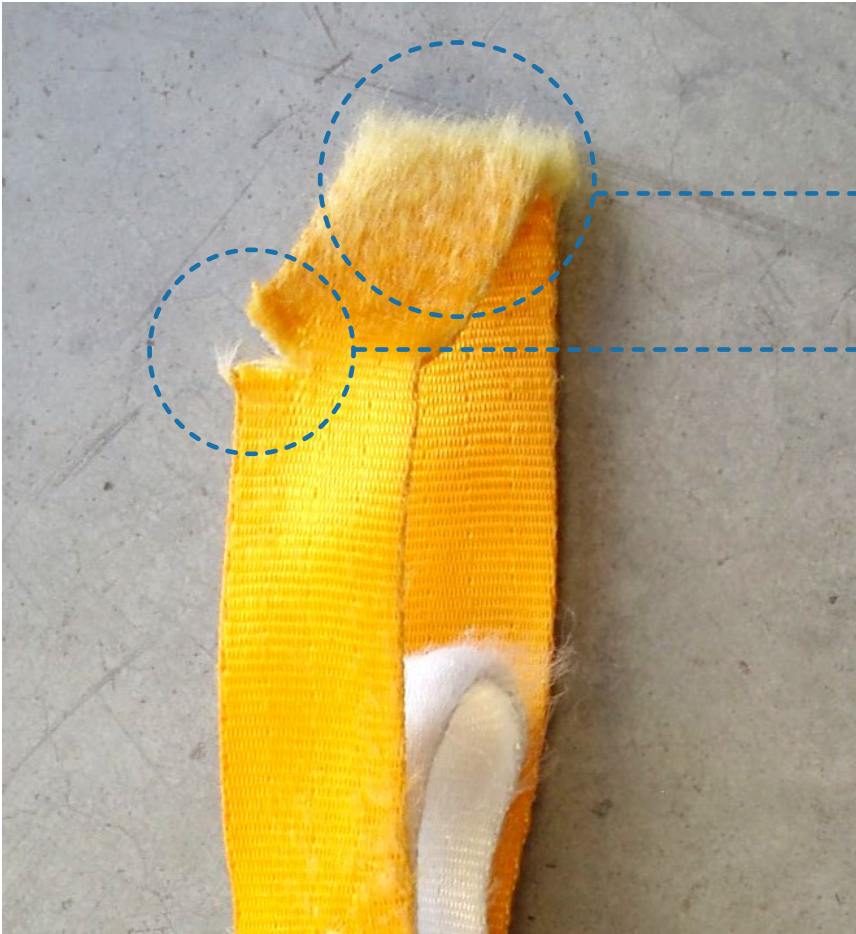
Replace worn key-lock buckles!

03. STITCHING



Do not use hoist-sling if stitching has become loose or undone!

04. WEBBING

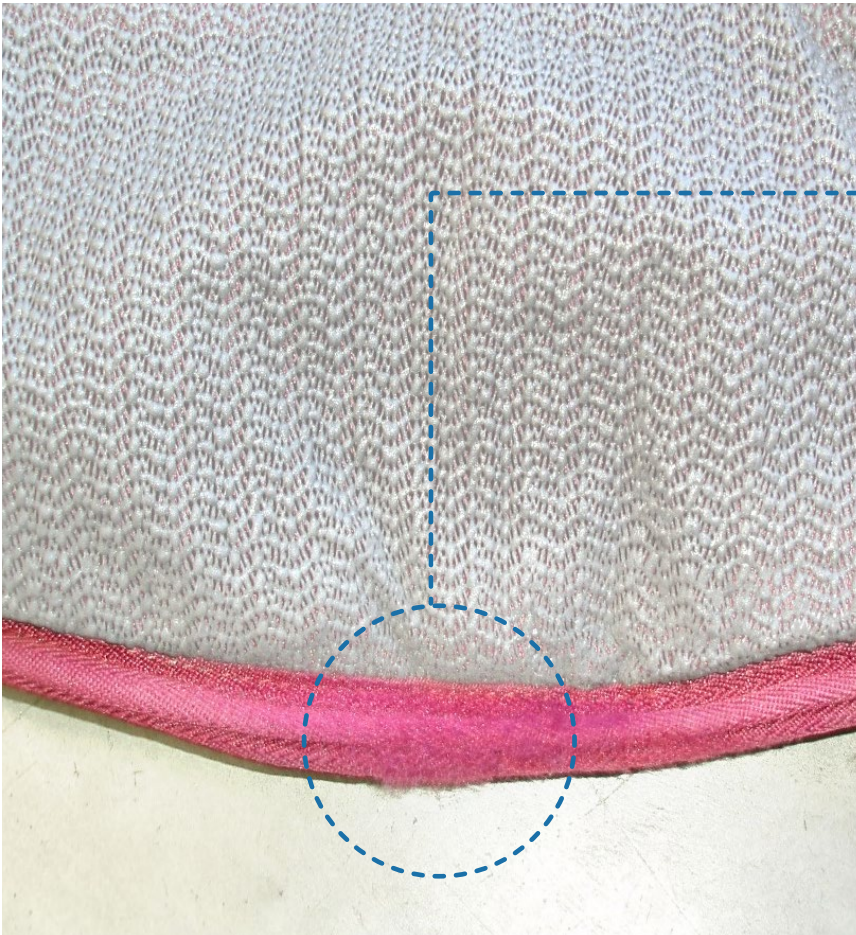


Over time webbing can become badly worn, frayed or damaged.

Do not use hoist-sling if any webbing is badly worn.

Do not use hoist-sling if any webbing has been damaged.

05. EDGE BINDING



Binding protects the integrity of the sling fabric.

**Replace worn binding to extend the life of the hoist-sling.
Do not use hoist-sling if any webbing has been damaged.**

06. CARE LABEL



Because hoist-sling care labels contain important safety information,

Do not use hoist-sling if care label has become unreadable.

07. FOAM INNER & FABRIC



When the hoist-sling foam inner or fabric integrity is compromised the sling must be replaced.

08. VELCRO



After time Velcro can lose its grip.

Do not use hoist-sling if Velcro is not holding well.

REPAIR OR REPLACE



Some common repairs:

- Damage to some webbing.
- Velcro not holding.
- Worn key locks.
- Broken buckles.
- Stitching unpicking.
- Faded care labels replaced.



Hoist-sling must be replaced:

- When the sling mesh is damaged.
- If the foam inner is damaged.
- When there is specific problems but the sling is generally worn.

SUMMARY - WHEN TO PUT A HOIST-SLING ASIDE FOR REPAIR OR REPLACEMENT



Do not use a sling when:

- Key lock buckles are damaged or do not “click” into position.
- Webbing is worn or damaged.
- Any other buckles are broken or not working properly.
- Velcro not holding.
- Sling fabric has become damaged or worn.



CARING FOR YOUR HOIST-SLING

- Fasten all buckles before washing. This prevents them from being broken during the wash cycle.
- Fastening all Velcro components together before washing – hook Velcro when exposed will damage the sling webbings, bindings & fabric.
- Hoist-sling fabric & foam will last longer if there is not a sudden change in temperature during washing – no hot then cold washes. Bring the temperature down slowly.
- Take care not to run over the sling with the hoist – lift the hoist off the sling instead of pulling the sling out from under the hoist.
- Do not use the hoist close to other objects which may damage the hoist-sling.





THANK YOU!



✉ sales@abletechservices.co.nz

☎ 0800 339 336 or 09 269 8990

🌐 www.abletechservices.co.nz

📍 1/68 McLaughlins Road, Wiri, Auckland 2104, NZ